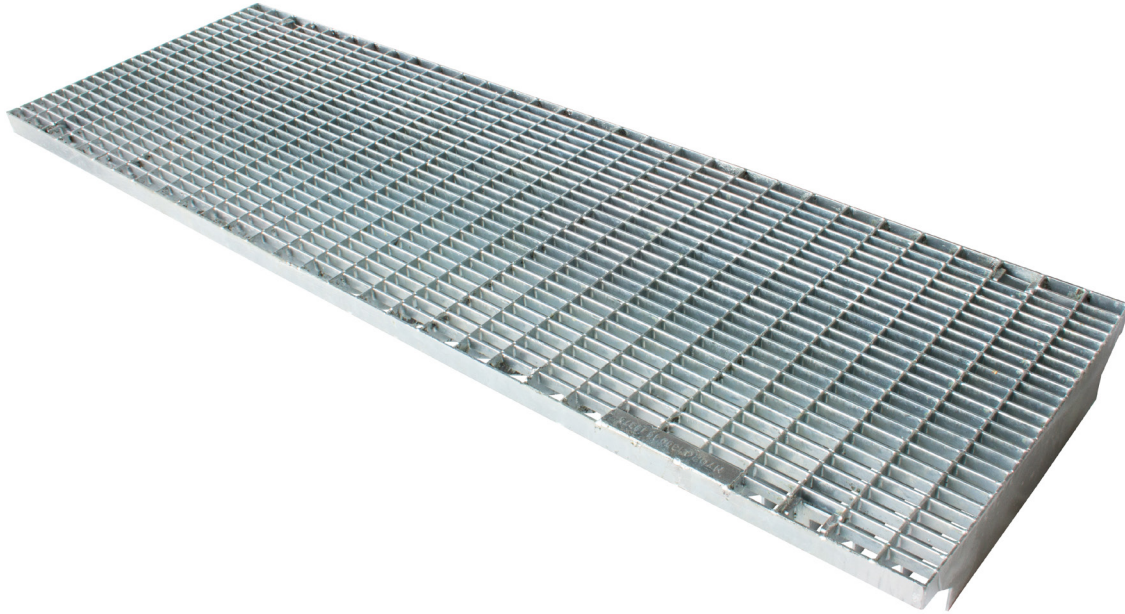


**TECHNICAL DATA SHEET - 323mm Galvanised Steel Mesh Grate STARFIX - Class C**



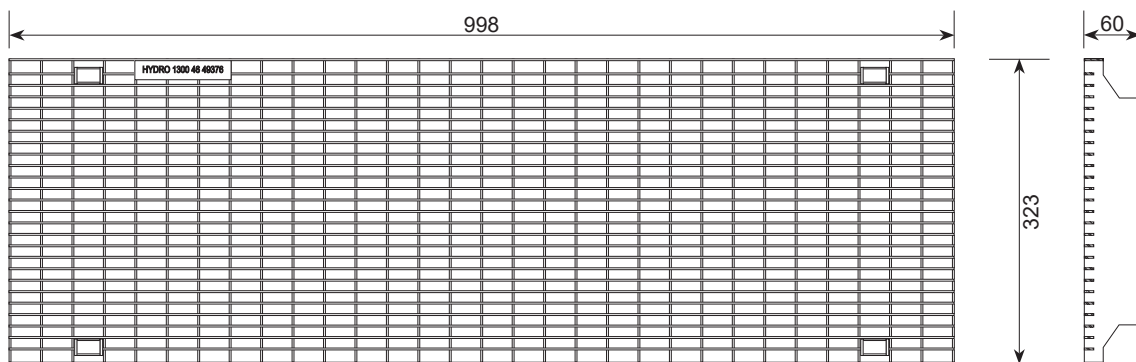
**Hydro Galvanised Steel Mesh Grate STARFIX**

Certified to load class C 150kN (AS3996), point load approximately 5,000kgs.  
 Compliant for wheelchair & walking cane safety (AS1428.2 - Clause 9).  
 Compliant for bicycle tyre penetration resistance (AS3996 - Clause 3.3.6).

Intake area of 252,322mm<sup>2</sup> per metre of grate.  
 Grates compatible with Hydro **Mearin Plus/Expert 200** channel system & inline sump.  
 Manufactured from galvanised mild steel.  
 Installation must be in accordance with the installation instructions from the manufacturer.  
 Total width of grate is 323mm.

**Locking Mechanisms**

Starfix locking system offers securement to channel units or inline sumps.



PRODUCT SPECIFICATION				
DESCRIPTION	MATERIAL	LENGTH	PRODUCT CODE	WEIGHT (KG)
323mm Galvanised Steel Mesh Grate STARFIX	Galvanised Steel	998mm	170550	13.2

TOLL FREE: **1300 GO HYDRO** | [hydrocp.com.au](http://hydrocp.com.au)

[DRAIN](#) • [STAINLESS](#) • [DIAMOND TOOLS](#) • [GRATES & FRAMES](#) • [CABLEPIT](#) • [COVERS](#)