



MELBOURNE CONVENTION EXHIBITION CENTRE

MELBOURNE CONVENTION AND EXHIBITION CENTRE

PROJECT:

The recent \$300 million expansion of the Melbourne Convention and Exhibition Centre, a joint project by the Victorian Government and Plenary Group, added 20,000 square metres to the venue. The expansion is fully-connected and integrated with the existing MCEC buildings, and includes a 9,000 square metre multi-purpose event space, a retractable 1,000 seat theatre, and new exhibition halls.

SOLUTION:

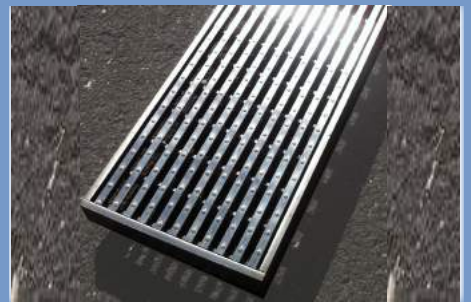
A key feature of the new expansion involved the creation of a centralized indoor-outdoor “hub” space, designed to be the melting pot and access point for all visitors of MCEC. With the new area set to attract big events and 74,000 more visitors annually, a functional, adaptable, safe and visually appealing drainage solution was required.

Hydro’s locally-supplied stainless steel grate and frames delivered outstanding results. Functional and versatile, Hydro’s stainless steel wedgewire heelguard grating was used throughout this project for drainage, ventilation, as well as visual appeal. Hydro's stainless steel drainage systems delivered multiple benefits, including a safe and trafficable finish for pedestrians and maintenance vehicles, and visual cohesion between the old and new areas of MCEC. For more information, contact Hydro on 1300 GO HYDRO.

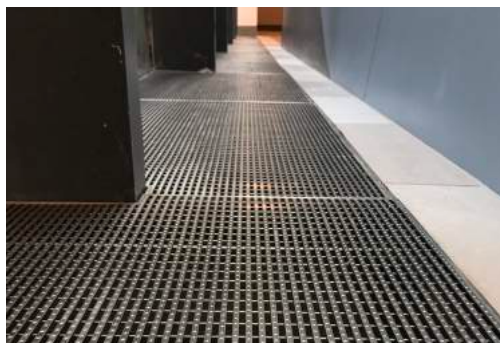


BESPOKE STAINLESS STEEL GRATES AND FRAMES

- Available in load classes up to Class D.
- Durable, strong, corrosion and chemical resistant.
- Custom made to suit specific project requirements.
- Ideal for drainage and ventilation applications



- Architectural finish
- Multiple applications and finish options available



TOLL FREE: 1300 GO HYDRO | hydrocp.com.au

[DRAIN](#) • [STAINLESS](#) • [DIAMOND TOOLS](#) • [GRATE & FRAMES](#) • [CABLEPIT](#) • [COVERS](#)